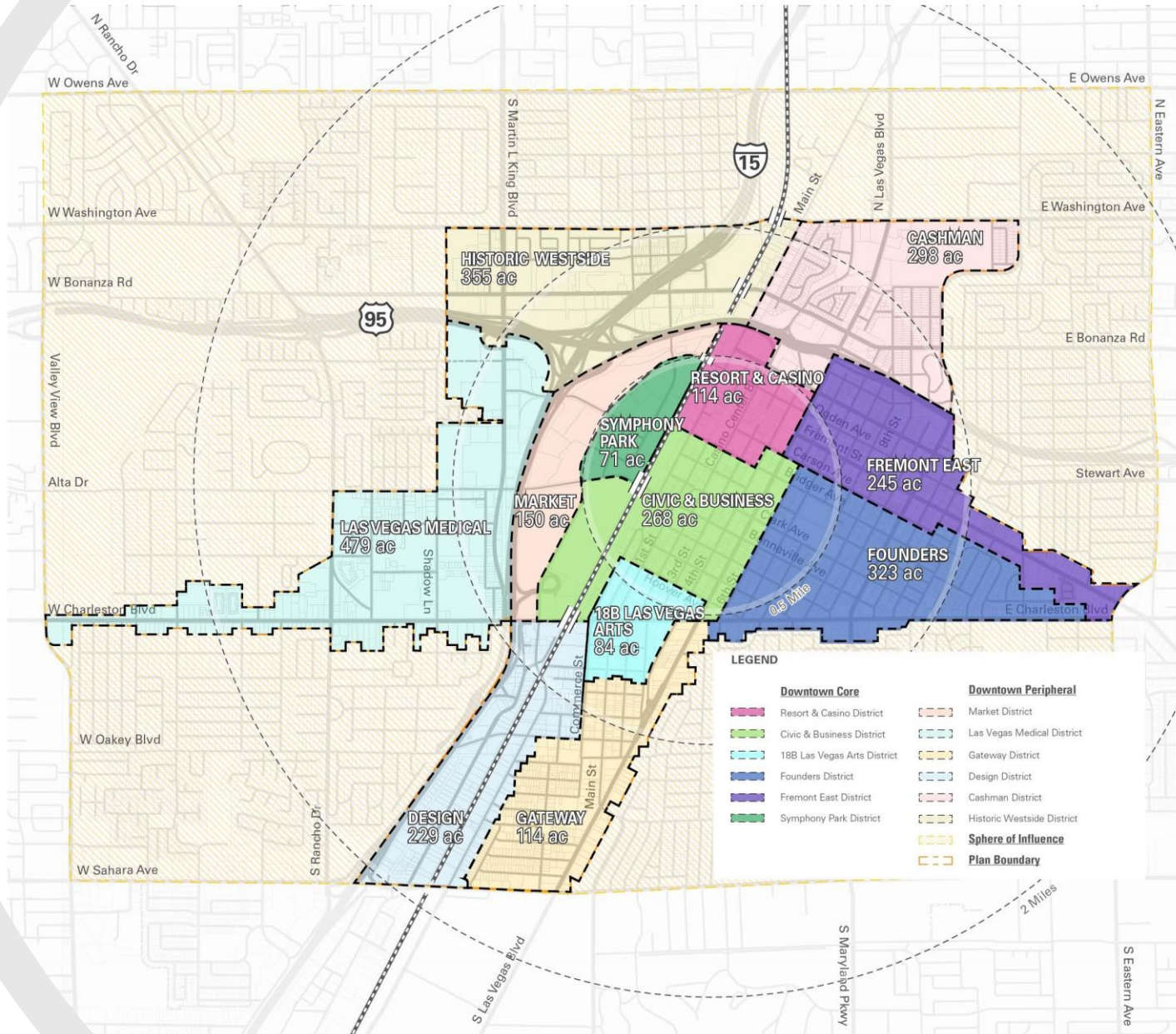


Moderator: Julie Quisenberry— City of Las Vegas

- Presenters:
- **Gina Venglass**, Public Works Engineer – DT Infrastructure
- **Tracy Reich**, Sr. Economic Development Specialist – DT Residential
- **Connie Gamble**, UNLV Real Estate – LV Medical District
- **Ryan Smith**, Business Development Manager – attracting technology to DT
- **Tammy Christensen**, Sr. Economic Development Specialist – 18b Arts District/Brewery Row















LAS VEGAS BLVD/ SAHARA AVE PEDESTRIAN BRIDGE

ALTERNATIVE 2 FLUTTER - BELOW DECK STEEL TRUSS

GCV'
TYLIN INTERNATIONAL



Downtown Housing Update

March 24, 2021





SHARE Downtown 1300 Casino Center Blvd.





Showboat Park Apartments 2800 Fremont St





Renovations

Boarded up & underutilized properties are making a comeback

Sample Projects from 2020:

- Holiday House Conversion to 122 units
- 322 N 14th Street – 8 units





Parc Haven 250 City Parkway in Symphony Park





Auric@Symphony Park 251 City Parkway





Apex @ Meadows

4480 Meadows Lane





Symphony Park Parcels C & D



SYMPHONY PARK™ | BLOCK C+D

CONCEPT RENDERING

SOUTHERN LAND
COMPANY





Pipeline

Projects under construction	972
Projects more than 12 months before start	5655
Updated/expanded/conversion Projects	322
RDA Adjacent projects	<u>824</u>
	7773
Completed 2017- Pres.	421



UNLV SCHOOL OF
MEDICINE, UNLV MEDICINE
AND THE LAS VEGAS
MEDICAL DISTRICT



UNLV School of Medicine Timeline

- June 2015 UNLV School of Medicine received start-up funding from State of Nevada
- June 2016 Clark County approved transfer of 9.11 acres of land at 625 Shadow Lane
- October 2016 UNLV School of Medicine started student admissions process and opened its first clinical practice in partnership with Grant A Gift Autism foundation
- June 2017 donor contributed funding of \$25 million to Medical Education Building project
- July 2017 The charter class of 60 medical students arrived at UNLV to begin their education and UNLV started operations of 17 previous UNR Medicine Clinics
- November 2019 a group of private donors agreed to pay for construction of medical education campus to serve UNLV school of Medicine permanent campus.

October 2020 UNLV Medical Education Building Groundbreaking

- \$150-million project funded by private donations, is ahead of schedule, planned opening Fall of 2022
- 135,000 square feet
- Will accommodate class size of up to 120, doubling current capacity



UNLV

Medical Education Building

January 2021



UNLV

Shadow Lane Campus



30.78 Acres
291,000 SF

UNLV



625 Shadow Lane – Future MEB



1707 W Charleston - SLCE



1001 Shadow Lane – SLCA-D



1125 Shadow Lane - SLCF

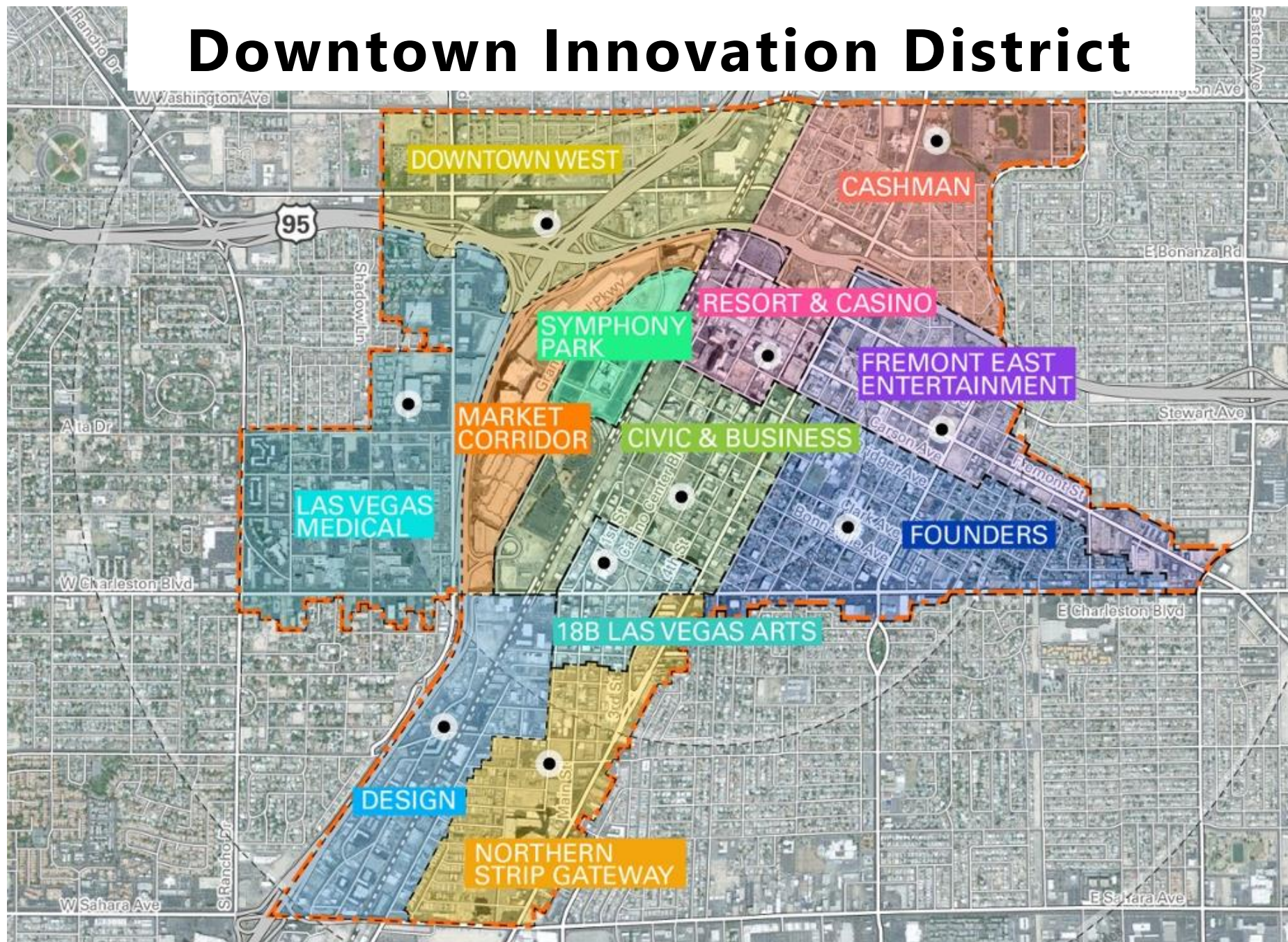
City of Las Vegas

Overview of Smart City Initiatives



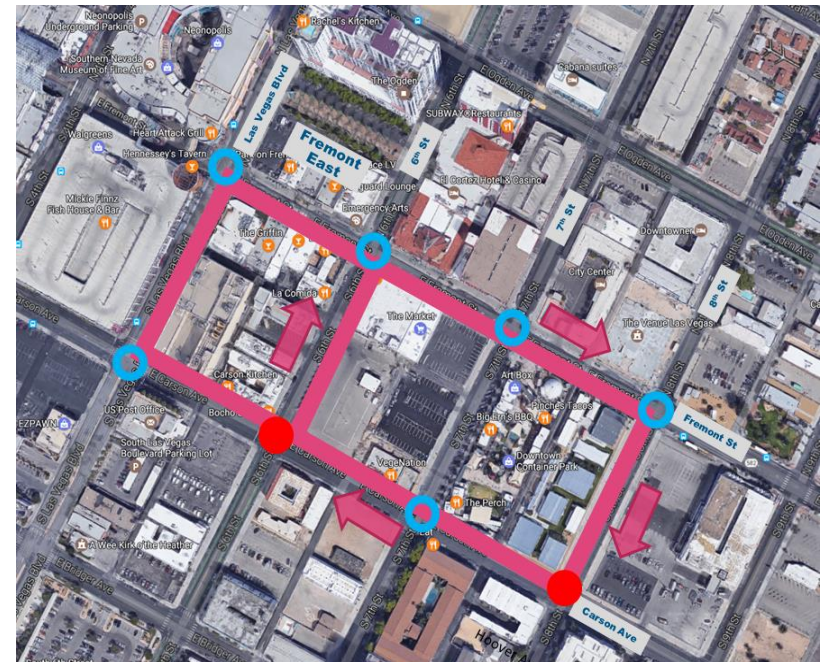
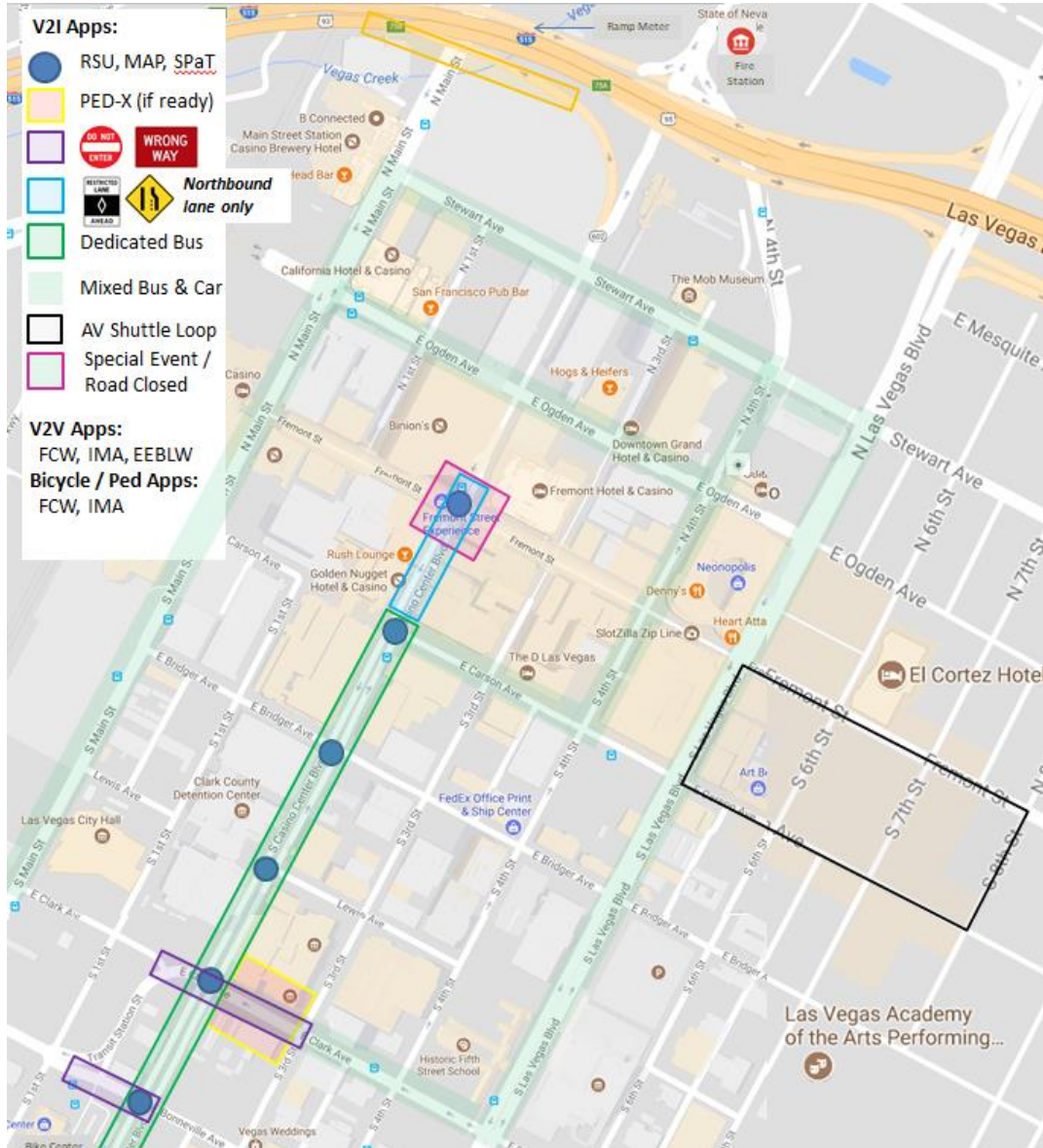


Downtown Innovation District





Smart Mobility



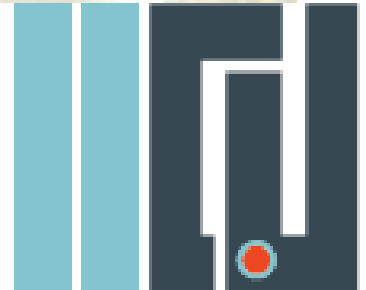


International Innovation Center @ Vegas





Remote Work Initiative



ARTS DISTRICT AND BREWERY ROW

March 24, 2021





18b Arts District Update

New businesses that have opened in the past year

Businesses that stayed open or temporarily closed and opened back up

A few closed permanently during the pandemic

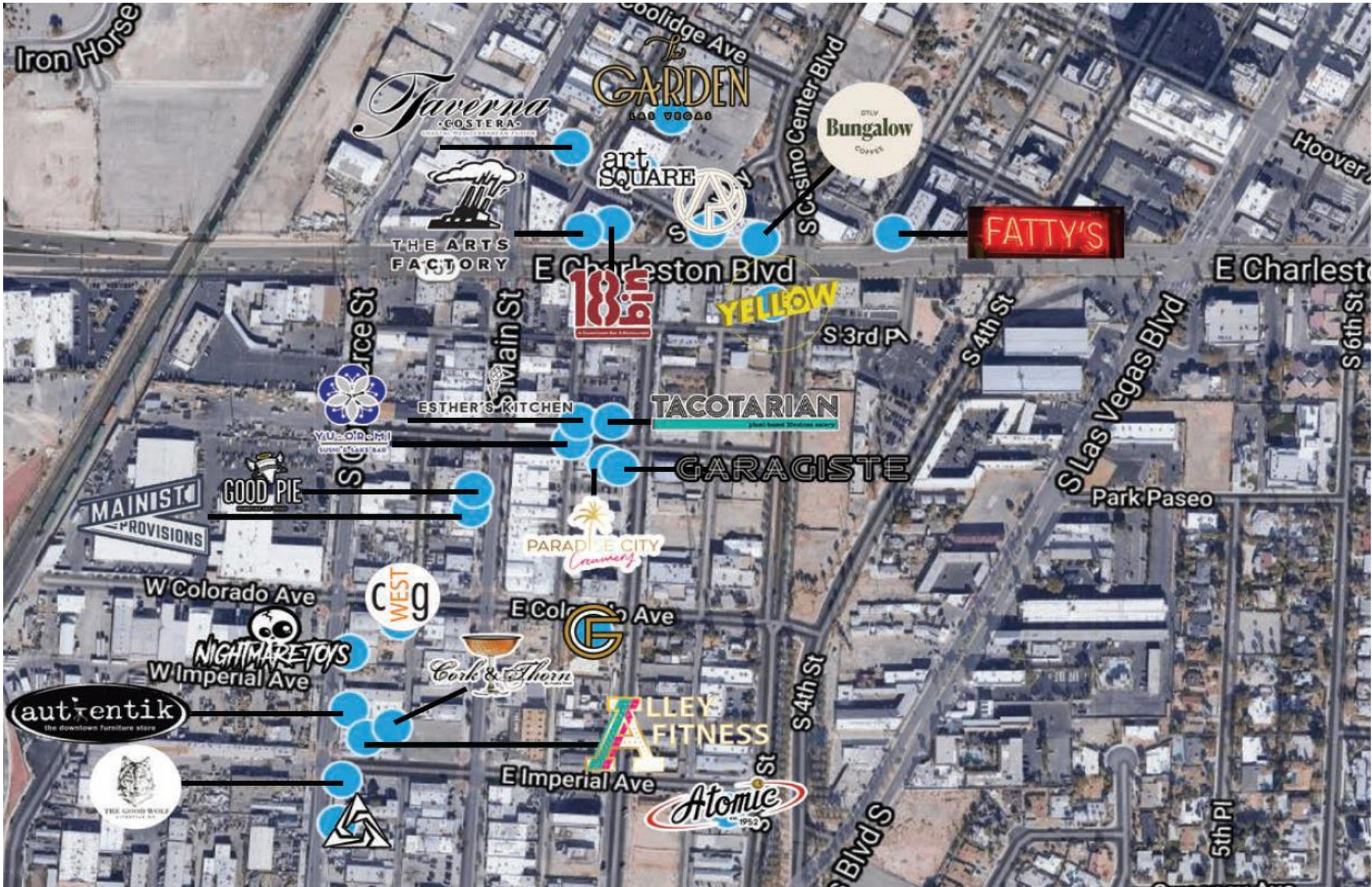
Residential – shareDowntown 63 apartments, bar and coffee shop

April 2nd – First Friday return to smaller in person event





18b Arts District Business Map





Main Street Provisions



Fatty's



Nightmare Toys



Good Pie





The Garden



Yellow Photo Booth



The Layer Lounge





Brewery Row

Why create district

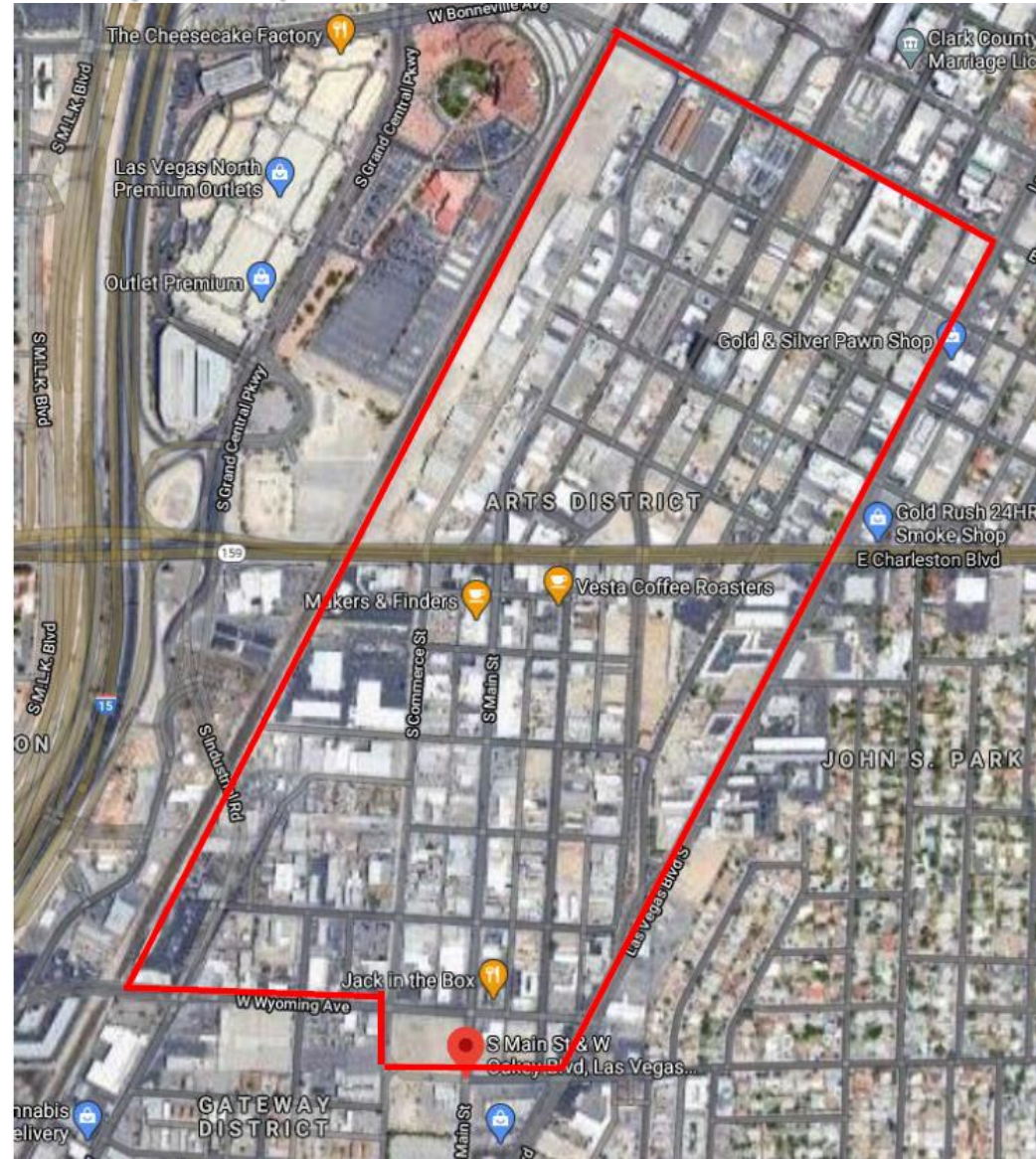
Who is involved





Brewery Row

Boundary Map & Business License Incentive





Brewery Row

Current Breweries

Current breweries operating in Brewery Row:

- Servehazah Bottle Shop & Tap Room
- Able Baker Brewing
- CraftHaus Brewery
- Hop Nuts Brewing
- HUDL Brewing Company
- Nevada Brew Works
- Beer District Brewing
- Three Sheets Craft Brew Bar





**BREWERY
ROW**



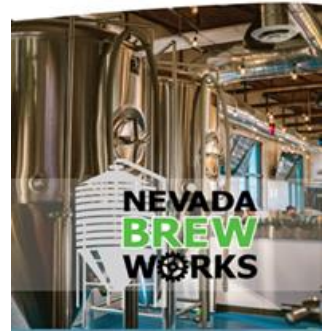
City of Las Vegas
Downtown

Brewery Row Banner Program

Create program to promote downtown districts using existing light poles

Timeline – March – April 2021 create materials
Installation once incentive approved

**BREWERY
ROW**



City of Las Vegas
Downtown

**BREWERY
ROW**



City of Las Vegas
Downtown

**BREWERY
ROW**



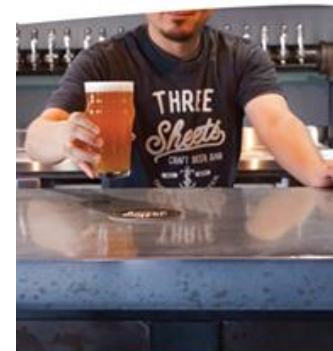
City of Las Vegas
Downtown

**BREWERY
ROW**



City of Las Vegas
Downtown

**BREWERY
ROW**



City of Las Vegas
Downtown

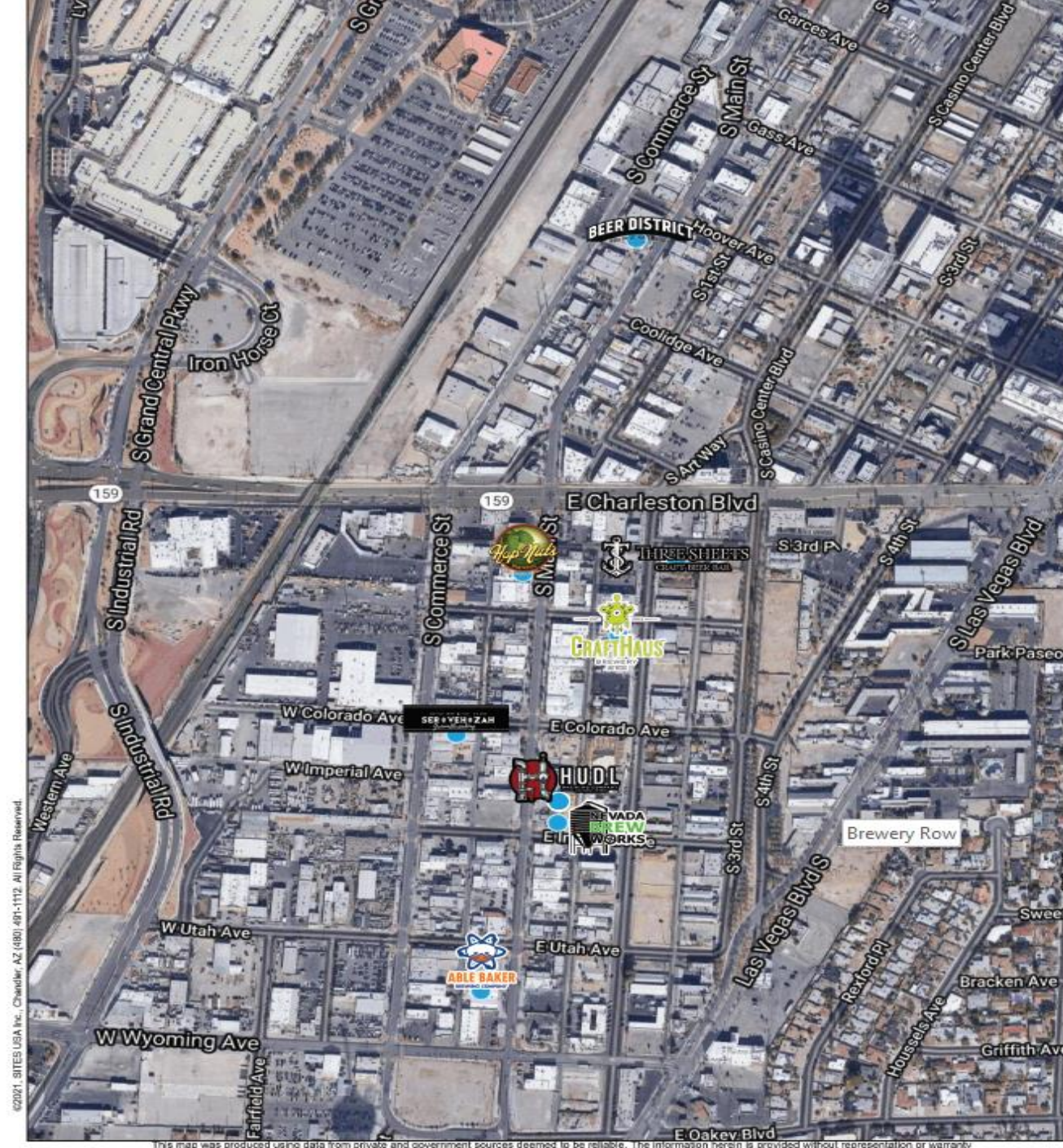
**BREWERY
ROW**



City of Las Vegas
Downtown



Breweries Map



©2021, SITES USA Inc., Chandler, AZ (480) 481-1112. All Rights Reserved.

This map was produced using data from private and government sources deemed to be reliable. The information herein is provided without representation or warranty.

Logos are for identification purposes only and may be trademarks of their respective companies.

Lat: 36.16799 Long: -115.15300 Zoom: 0.88 m